



Queensmead Primary Academy use **Repeat Signage** to create a digital notice board and displays

Queensmead Primary Academy opened its doors in November 2012 as the first primary academy in Leicester City sponsored by the Greenwood Dale Foundation Trust - a partnership of 24 academies across the East Midlands and Lincolnshire Coast. The Academy serves a long-standing local community in the Braunstone area of Leicester for the benefit of its 460 pupils and for the future of Queensmead. www.queensmeadacademy.org

We use Repeat Signage to create a digital notice board and displays. The same play list of presentations is transmitted to 4 different TV's around the school. We run a 1 week scheduled play list shown below.

Day View							
Week View <input checked="" type="checkbox"/> Show Weekend							
Local	Mon All day	Tue All day	Wed All day	Thu All day	Fri All day	Sat All day	Sun All day
0 ⁰⁰	CLOCKS.rsp	CLOCKS.rsp	CLOCKS.rsp	CLOCKS.rsp	CLOCKS.rsp	CLOCKS.rsp	CLOCKS.rsp
1 ⁰⁰							
2 ⁰⁰							
3 ⁰⁰							
4 ⁰⁰							
5 ⁰⁰							
6 ⁰⁰							
7 ⁰⁰							
8 ⁰⁰	School 1.rsp	School 1.rsp	School 1.rsp	School 1.rsp	School 1.rsp		
9 ⁰⁰							
10 ⁰⁰							
11 ⁰⁰	Week1-Monday.rsp	Week1-Tuesday.rsp	Week1-Wednesday.rsp	Week1-Thursday.rsp	Week1-Friday.rsp		
12 ⁰⁰							
13 ⁰⁰	Pupil_Work.rsp	Pupil_Work.rsp	Pupil_Work.rsp	Pupil_Work.rsp	Pupil_Work.rsp		
14 ⁰⁰	School 1.rsp	School 1.rsp	School 1.rsp	School 1.rsp	School 2.rsp		
15 ⁰⁰							
16 ⁰⁰							
17 ⁰⁰							
18 ⁰⁰							
19 ⁰⁰							
20 ⁰⁰							
21 ⁰⁰	CLOCKS.rsp	CLOCKS.rsp	CLOCKS.rsp	CLOCKS.rsp	CLOCKS.rsp		
22 ⁰⁰							
23 ⁰⁰							

Presentations included in the scheduled play list:

- Clocks.rsp
- School1.rsp
- School2.rsp
- Pupil-work.rsp
- Week1-Monday.rsp
- Week1-Tuesday.rsp
- Week1-Wednesday.rsp
- Week1-Thursday.rsp
- Week1-Friday.rsp

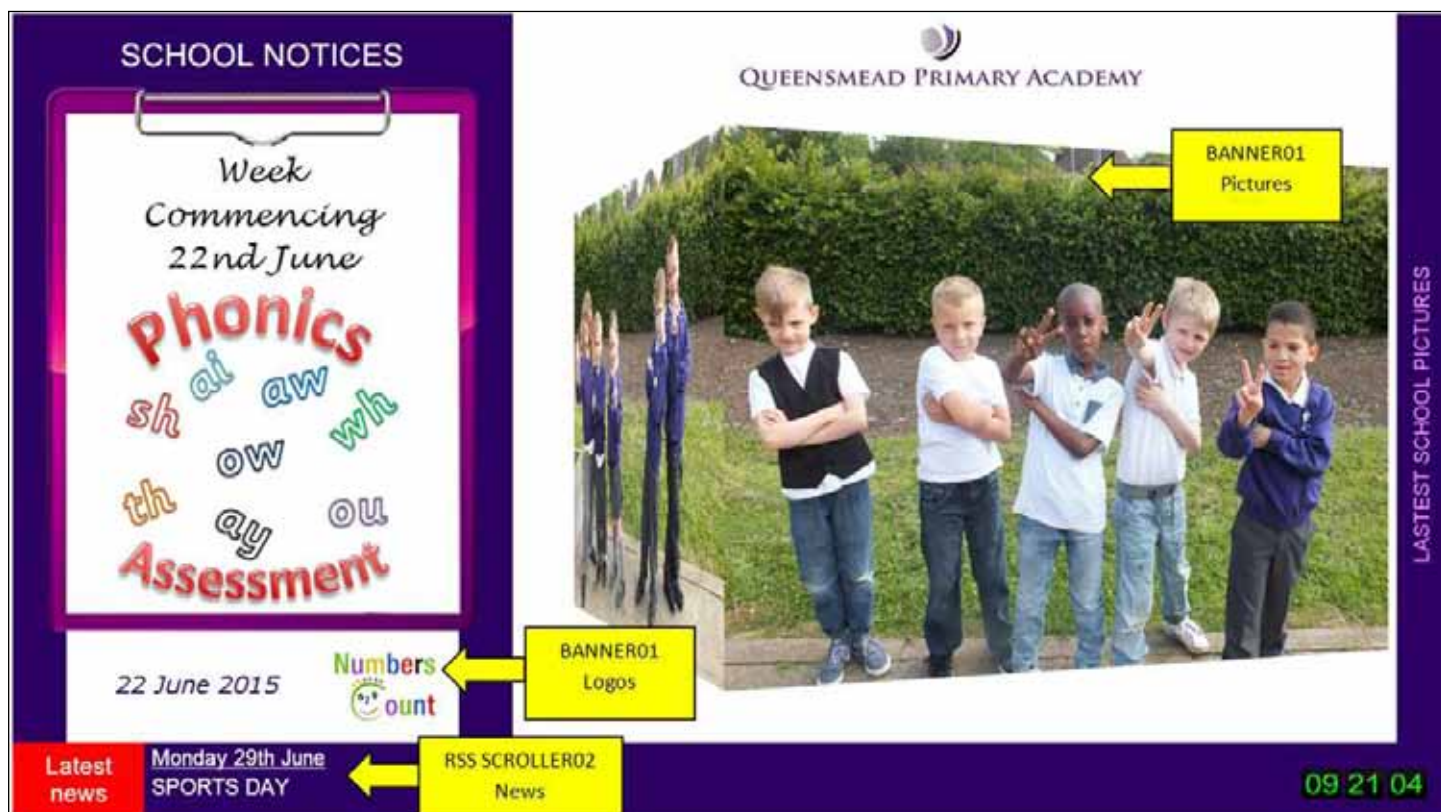
Clocks.rsp

This is used as a 'screen save' for out of hours.

		
London	New York	Paris
GMT Standard Time	Eastern Time (US & Canada)	Romance Standard Time
22/06/2015 09:31	22/06/2015 04:31	22/06/2015 10:31
09:31 AM	04:31 AM	10:31 AM

School1.rsp

This presentation is used as the main notice board.



SCHOOL NOTICES

Week Commencing 22nd June

phonics

sh ai aw wh

th ay ou

Assessment

22 June 2015

Numbers Count

QUEENSMEAD PRIMARY ACADEMY

BANNER01 Pictures

BANNER01 Logos

Latest news

Monday 29th June SPORTS DAY

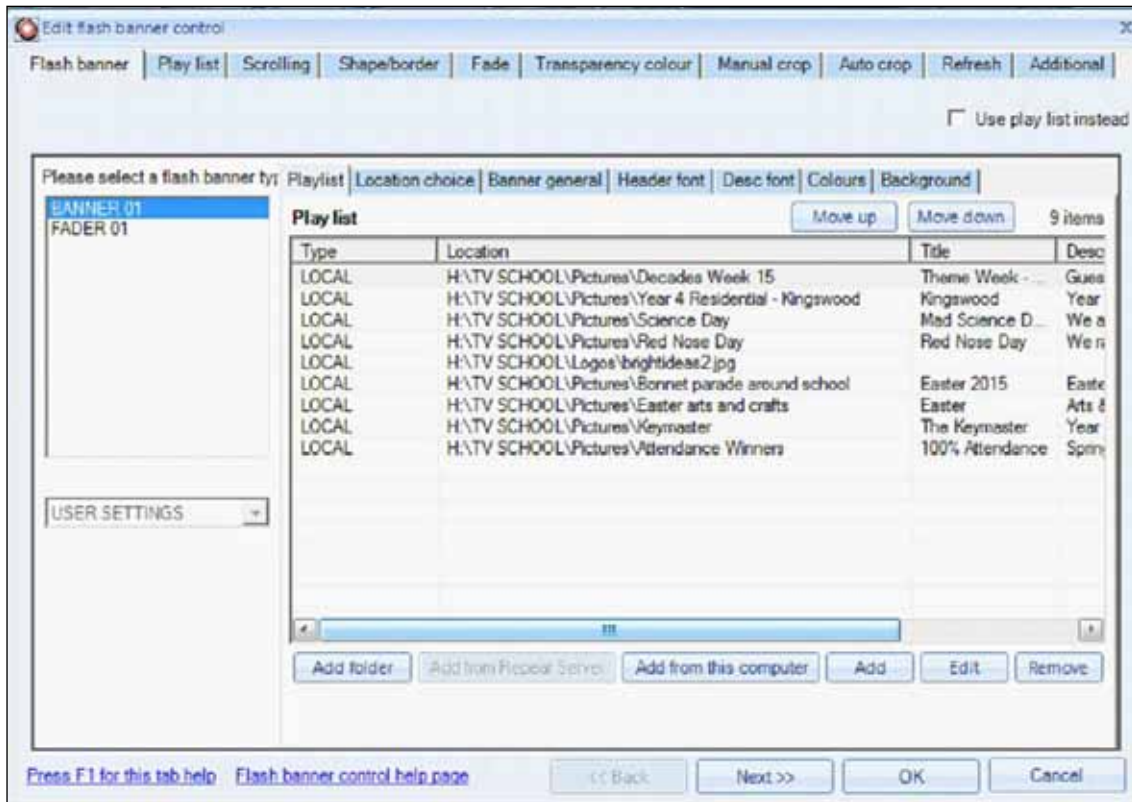
RSS SCROLLER02 News

09 21 04

LASTEST SCHOOL PICTURES

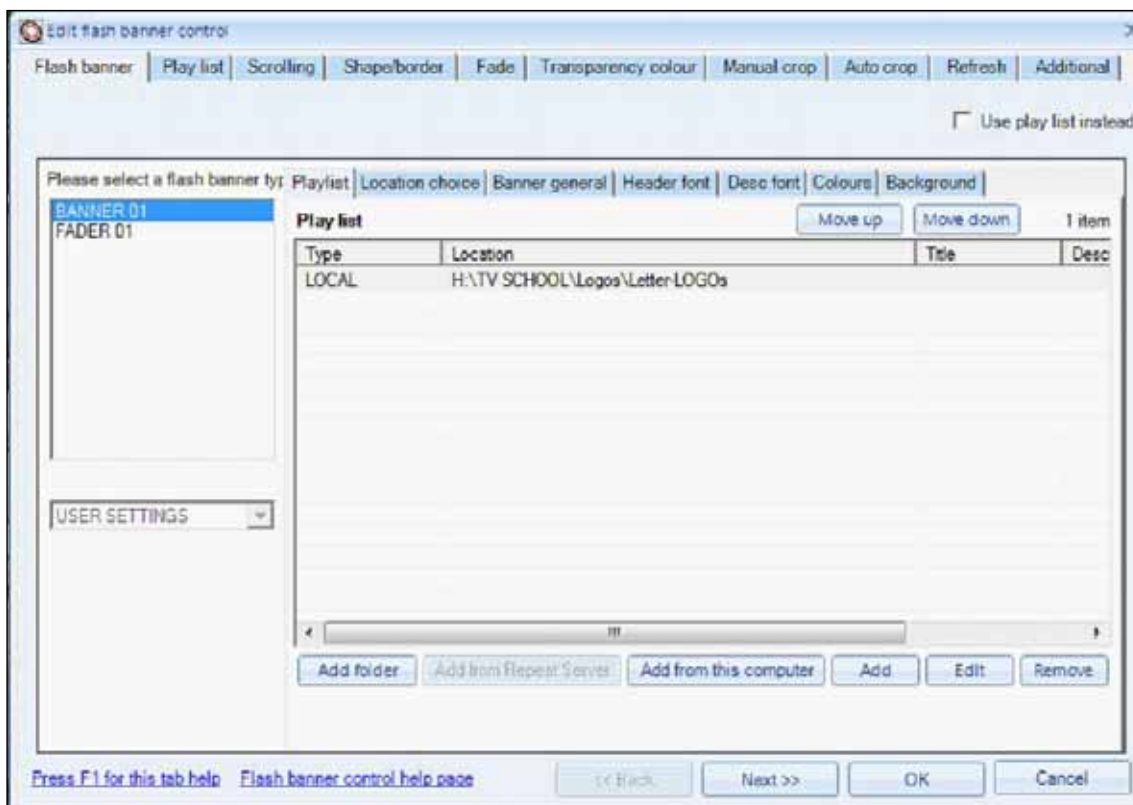
Banner01 Pictures

A collection of photos from recent events stored in folders and screened in a play list.



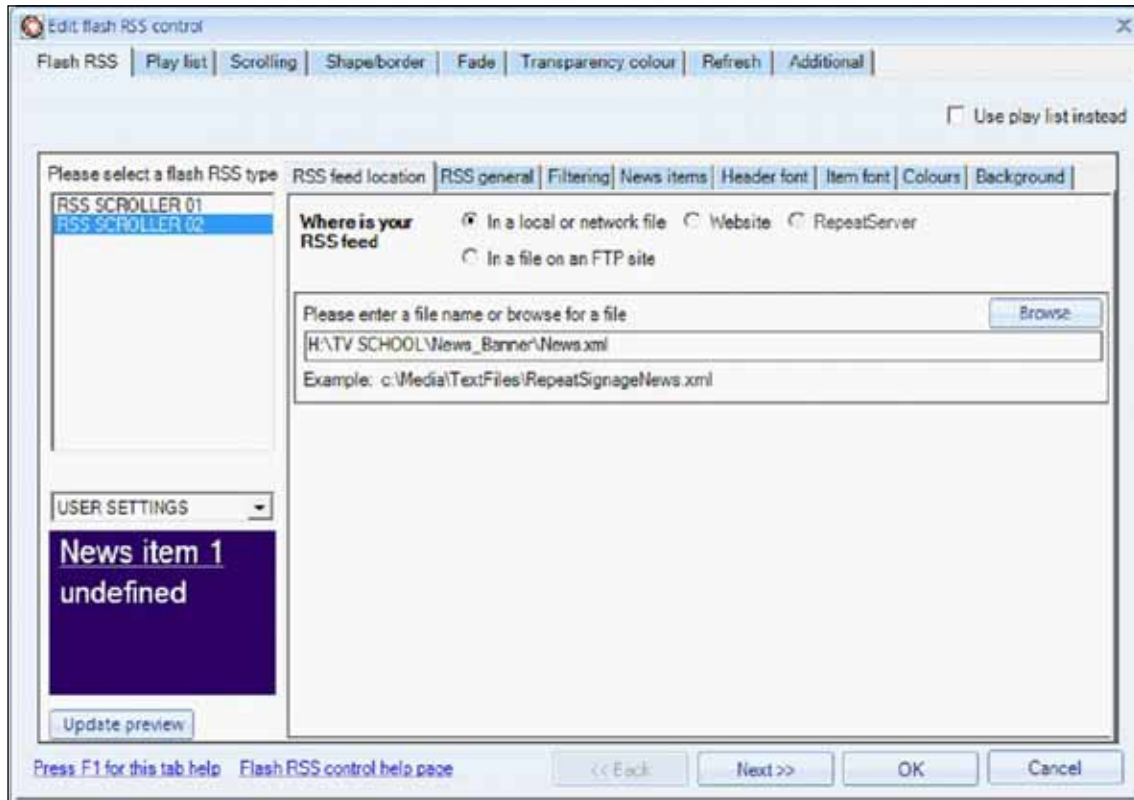
Banner01 Logos

A collection of various Award Logos attained by the school stored in a folder.




RSS SCROLLER02 News

A scrolling news 'flash' (RSS Feed) space pulled in from XML Notepad




Week1-Monday.rsp

This comes up at 11.30am to show today's school dinner selection. One of the TV's is in the Hall which the children have to pass on their way to the kitchen counter.




Queensmead Primary Academy


Week 1 Monday



Chicken & Mushroom Pie, New Potatoes and Vegetables




Bean & Vegetable Bake, New Potatoes and Vegetables (V)



Jacket Potato with Cheese (V)

Sandwich Selection

Cheese (V)
Ham & Cucumber
Egg Mayonnaise



Eve's Pudding with Custard

Fresh Fruit, Yoghurts, or Fruity Pot also available.

22/06/2015
09:46

Greenwood Academies Trust understands that there are different types of vegetarian diet.
Our menus reflect choices available for Lacto-ovo-vegetarians as this is the most common type of vegetarian diet.

Pupil-work.rsp

This is a selection of videos and pictures of current work being done by the pupils.

The screenshot shows a presentation software window titled 'Pupil-work.rsp'. The main area displays a grid of various shapes (triangles, squares, circles) in different colors and patterns. A yellow callout box labeled 'Student Work' with an apple icon points to the grid. To the right, a 'Play List Pupil Work' callout points to a text box containing instructions: 'Start on the red triangle and go to all the other red shapes. Keep away from the yellow shapes.' Below the grid, a 'Computing:' section states: 'Year 1 & 2 have been using logical reasoning to predict the behaviour of simple programs, creating and debugging BeeBot instructions'. An 'RSS SCROLLER02 Description' callout points to this text.

Play List Pupil Work

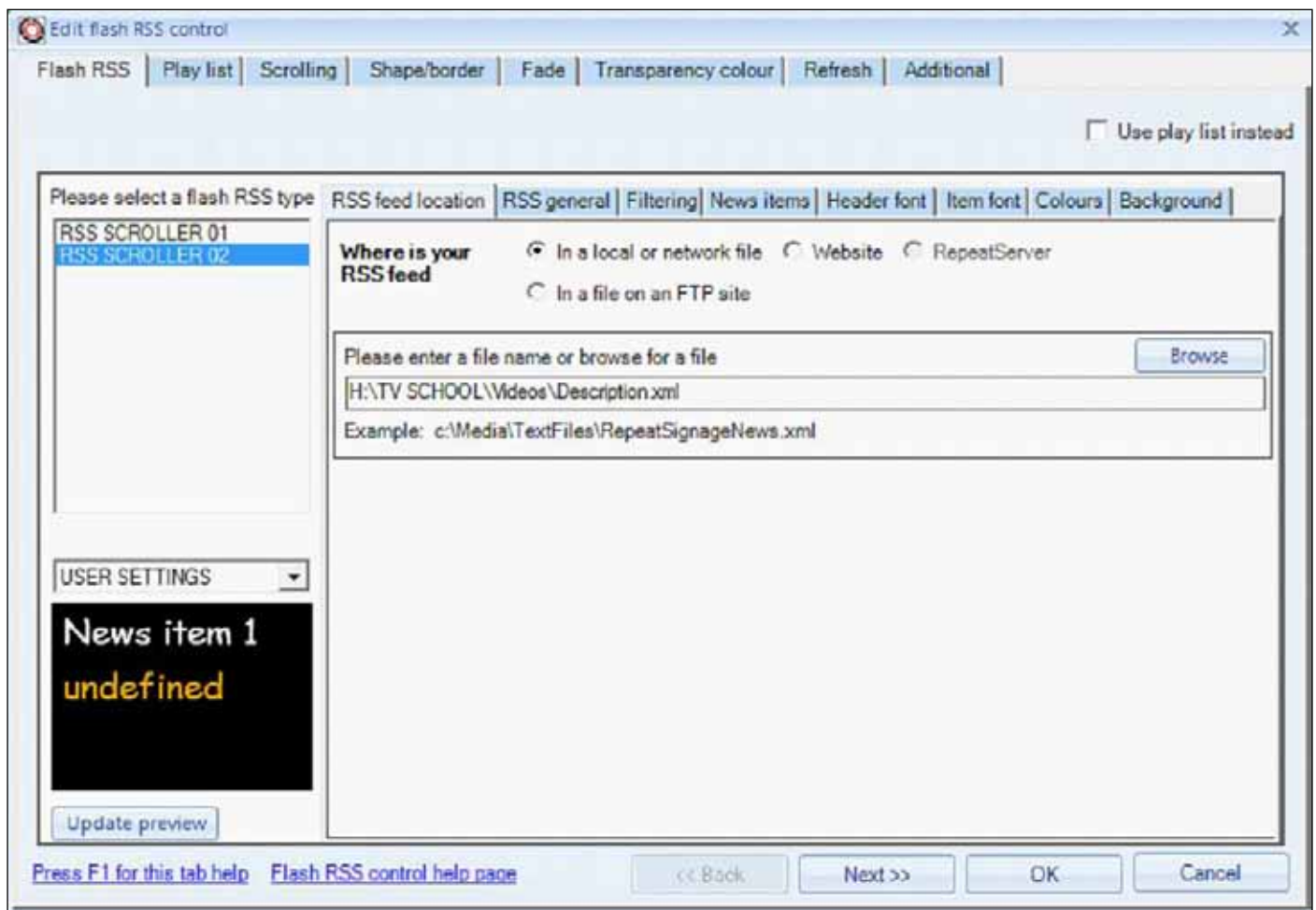
The screenshot shows the 'Edit existing video control' software interface. It features a 'Play list' tab and a table of video files. The 'Enable play list' checkbox is checked. The table lists several video files with their locations, names, durations, and descriptions.

Location	File or folder name	Duration	Description
Local or network file	\\QPA-FS-01.pri.gdft.org\Staff_Home_Drives\$T...	Play until complete	beebot.wmv
Local or network file	\\QPA-FS-01.pri.gdft.org\Staff_Home_Drives\$T...	Play until complete	scratch.wmv
Local or network file	\\QPA-FS-01.pri.gdft.org\Staff_Home_Drives\$T...	Play until complete	go.wmv
Local or network file	H:\TV SCHOOL\Videos\British Trees 1.wmv	Play until complete	British Trees 1.wmv
Local or network file	H:\TV SCHOOL\Videos\Identify Parts of a Plant...	Play until complete	Identify Parts of a Plant.wmv
Local or network file	H:\TV SCHOOL\Videos\British Birds.wmv	Play until complete	British Birds.wmv

At the bottom, there are controls for 'Default play time for each item' (Days: 0, Hours: 0, Mins: 0, Secs: 5, Millisecs: 0) and navigation buttons like '<< Back', 'Next >>', 'OK', and 'Cancel'.

RSS SCROLLER02 Description

A scrolling RSS Feed pulled in from XML Notepad



Repeat Signage digital signage software

Repeat Signage 2015 is easy to use, professional, digital signage software that helps you get your message across and promote your organisation. You just need a Windows based PC, a desktop or large format display screen and Repeat Signage. It is easy to use and you can have a presentation playing in minutes.



[Trial download](#)

Features include touch screen support, remote updating and scheduling of presentations, and it supports Windows 8/8.1, 7, Vista and XP. Outstanding level of support.

Repeat Signage 2015 now includes a built-in editor to create spreadsheets within your presentations. You can also create and display graphs of information. Ideal to easily create menus, sales figures, today's events, school attendance figures for classes, and other information. www.repeatsoftware.com